

FOR LEASE

University Corporate Center I
3501 Quadrangle Boulevard, Orlando, FL 32817



University Corporate Center I is designed with the high-tech user in mind while still providing upscale finishes and quality of construction for the corporate user. This three-story, 124,019 square foot Class A office project is ideally located in the heart of The Quadrangle Business Park.

Features

- High quality finishes throughout
- Large flexible floor plates
- Office space ranging in size from 1,612± RSF - 36,946± RSF
- In close proximity to The University of Central Florida, Central Florida Research Park, SR 417 (the Greenway), SR 408, Restaurants and Retail along University Boulevard
- Parking at a ratio of 5.31/1,000 RSF
- On-site security
- Telecommunications: Fiber optics by AT&T & Embarq

For additional information, please contact:

Greg Morrison, CCIM, SIOR

407.219.3500 x200

gmorrison@morrisoncre.com

Emily Zinaich

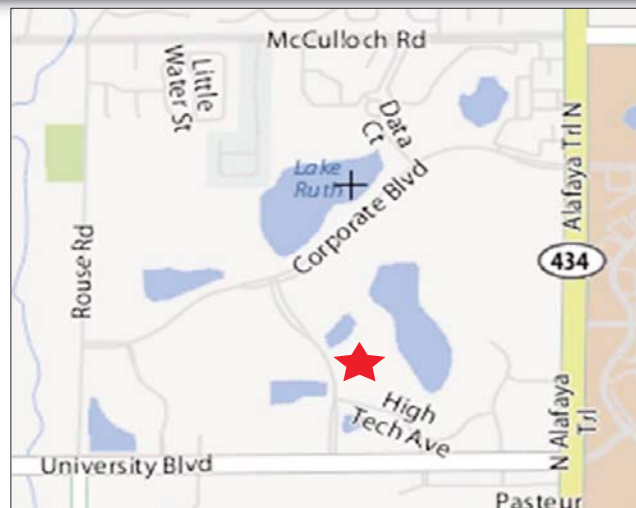
407.219.3500 x220

ezinaich@morrisoncre.com



FOR LEASE

University Corporate Center I
3501 Quadrangle Boulevard, Orlando, FL 32817



For additional information, please contact:

Greg Morrison, CCIM, SIOR

407.219.3500 x200

gmorrison@morrisoncre.com

Emily Zinaich

407.219.3500 x220

ezaich@morrisoncre.com

Leased by



UNIVERSITY CORPORATE CENTER I

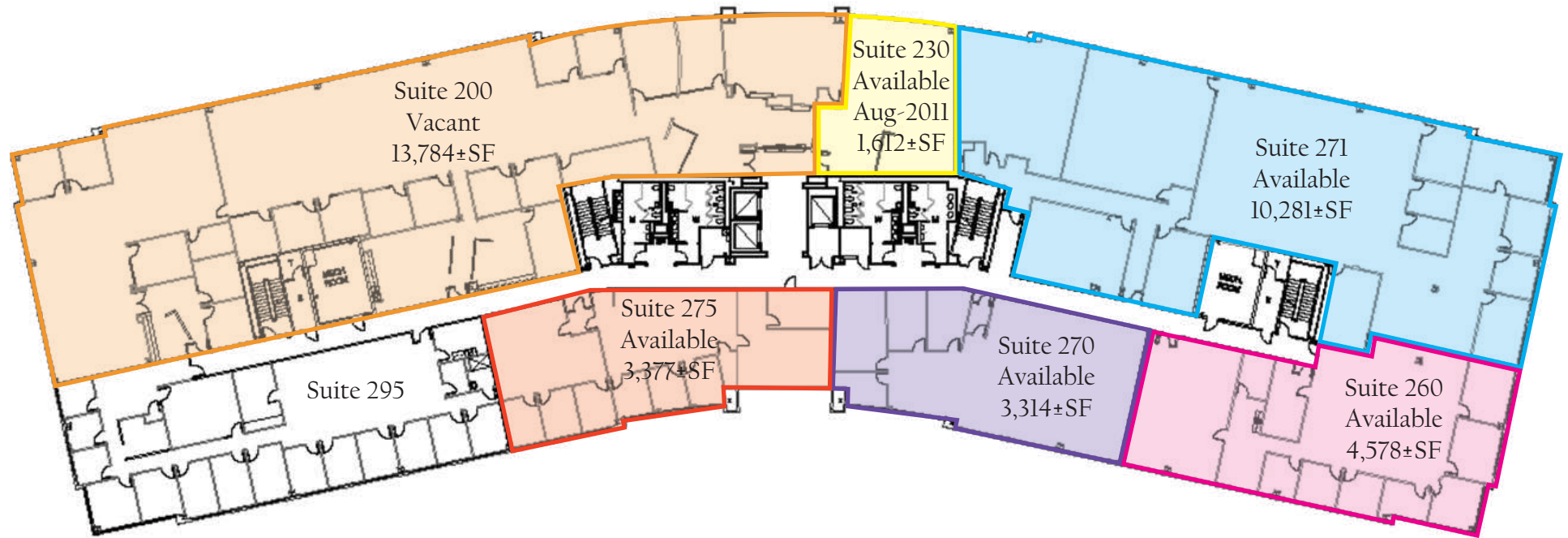
3501 Quadrangle Boulevard | Orlando, FL 32817



Suite 200 - 13,784± Available

UNIVERSITY CORPORATE CENTER I

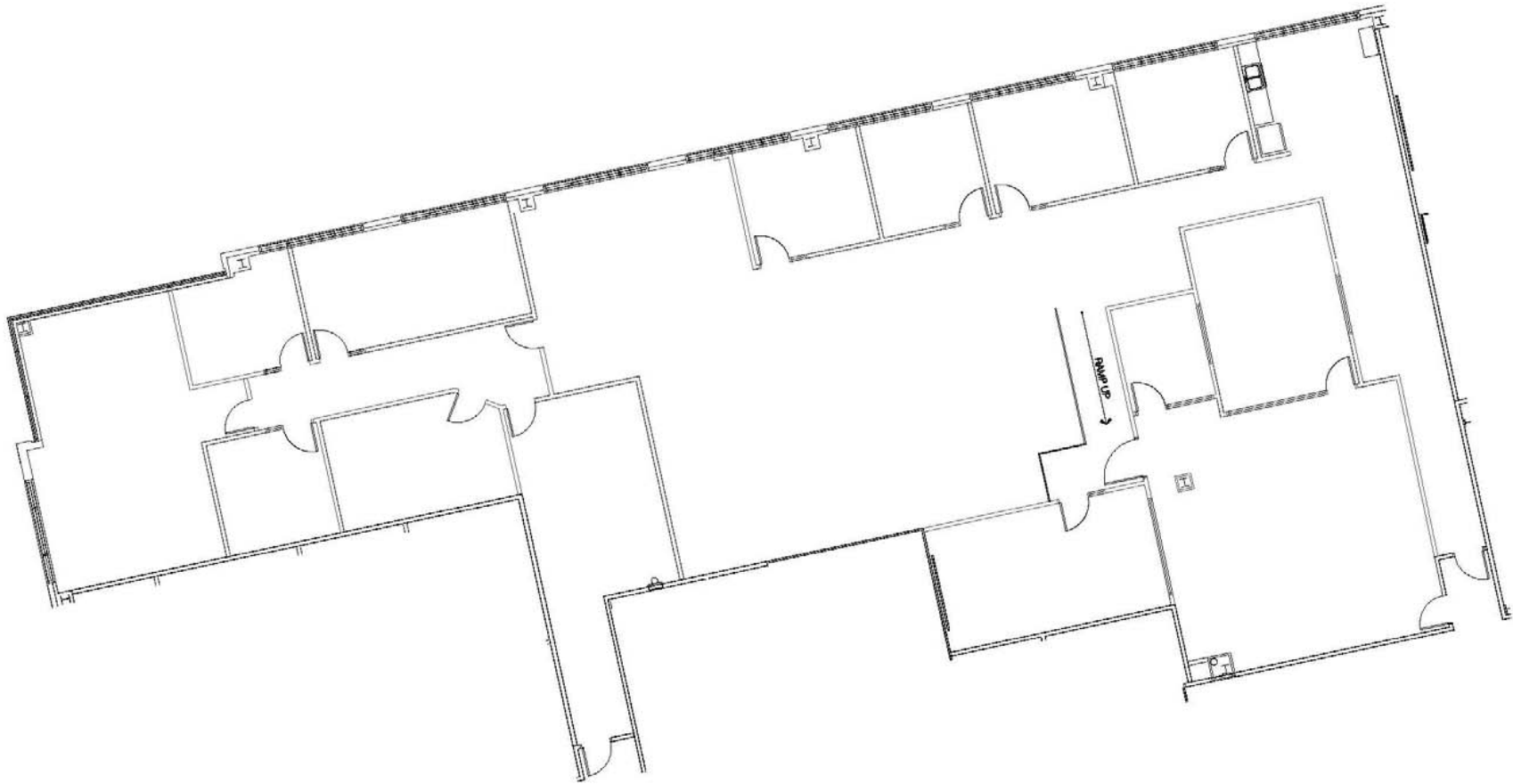
3501 Quadrangle Boulevard | Orlando, FL 32817



Second Floor - Up to 36,946± RSF

UNIVERSITY CORPORATE CENTER I

3501 Quadrangle Boulevard | Orlando, FL 32817



Suite 310 - 8,024± RSF